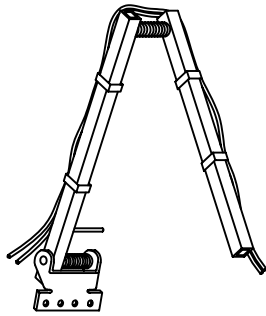
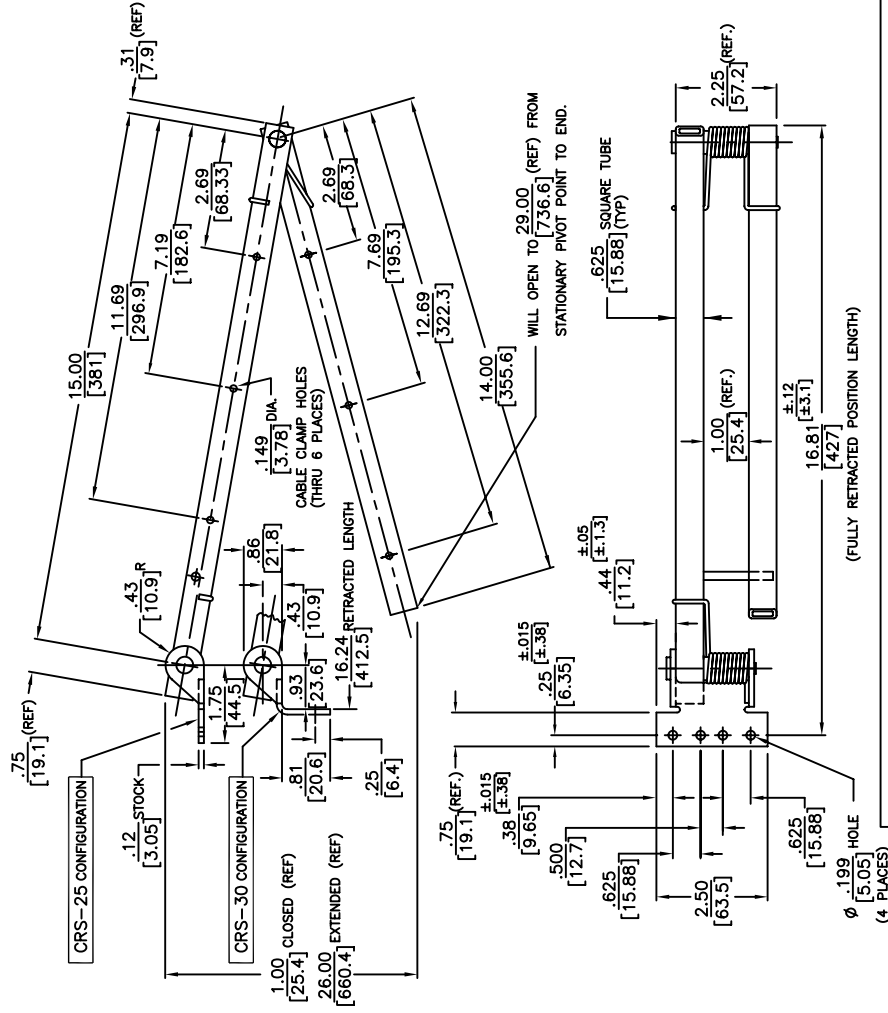


**NOTES:**

- FOR MIRROR IMAGE OF CABLE CARRIER  
SPECIFY AS: CRS-25-R OR CRS-30-R
- SHIPPING WEIGHT 1 LB 14 OZ./52 KG.



ISOMETRIC REPRESENTATION

**JONATHAN**  
Engineered Solutions

Irvine Technology Center  
410 Exchange, Suite 200  
Irvine, CA 92602  
Tel: (714) 665-4400  
Website: [www.JonathanEng.com](http://www.JonathanEng.com)  
Engineering • Production • Integration / Subassembly • Logistics  
United States • Mexico • China • Taiwan

DIMENSIONS SHOWN AS: IN. [MM]

TOLERANCE UNLESS OTHERWISE NOTED	XX ±.030
X	[±.8]
XXX	±.010
.XX	[±.25]

PART NO.

CRS-25/30

DESCRIPTION:

CABLE MANAGEMENT  
SERIES CRS-25/30

DATE:

1/11

ANGLES ±1°

COPYRIGHT © 2011 JONATHAN ENGINEERED SOLUTIONS

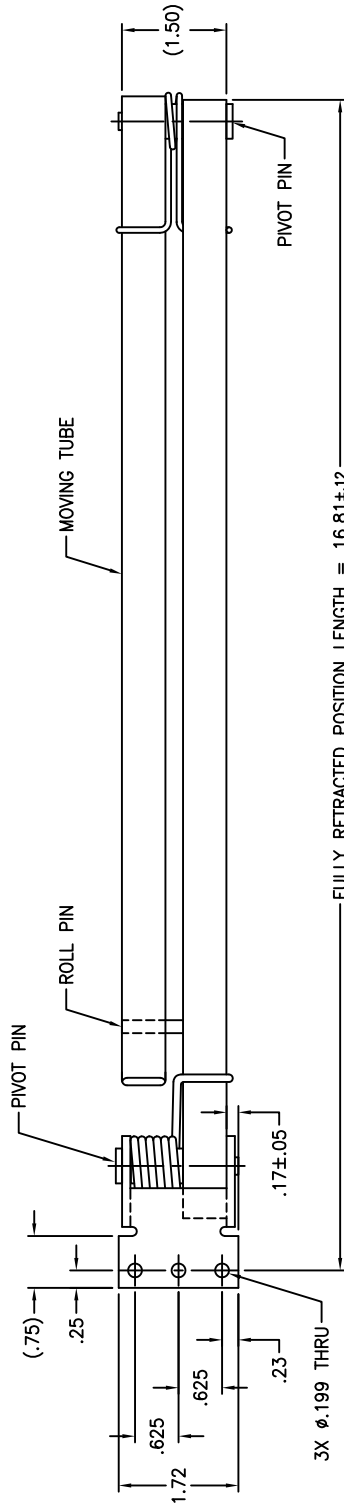
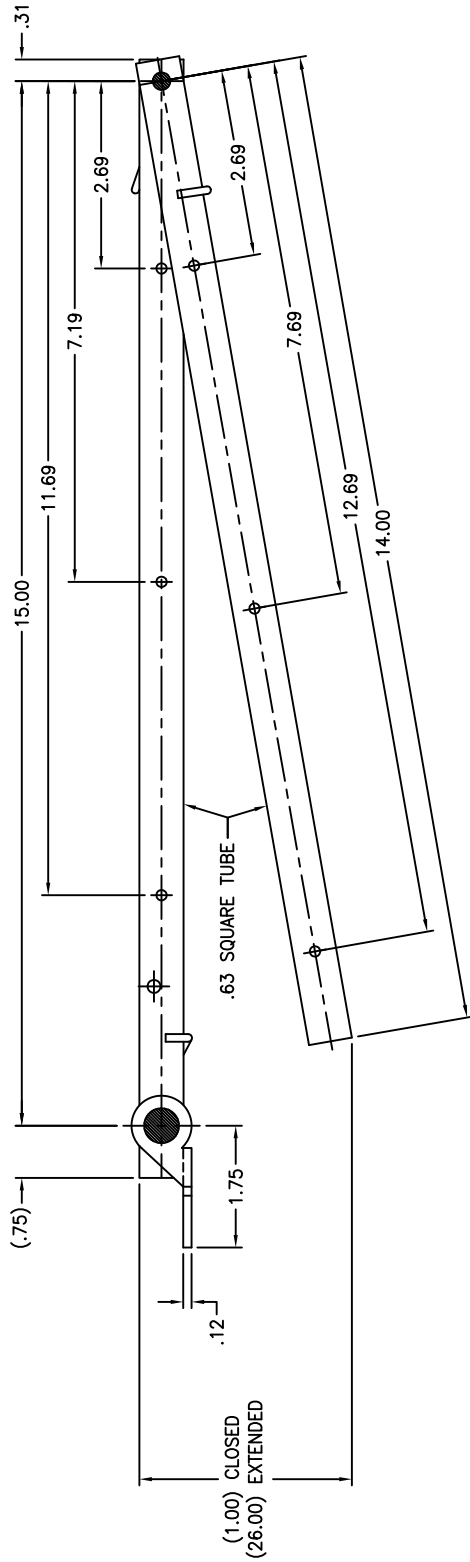
1 2 3 4 5 6

A

B

C

D



5. FOR MIRROR IMAGE OF CABLE CARRIER SPECIFY AS: CRS-25-1U-R.

4. MOUNT THE CRS WITH THE ORIENTATION OF MOVING TUBE ON THE TOP.

3. RECOMMENDED CABLE WEIGHT 15 POUNDS EVENLY DISTRIBUTED OVER BOTH ARMS

2. FINISH: ZINC PLATE.

1. MATERIAL: CARBON STEEL.

FULLY RETRACTED POSITION LENGTH = 16.81±.12

Irvine Technology Center  
 410 Exchange, Suite 200  
 Irvine, CA 92602  
 Tel: (714) 665-4400  
 Website: [www.JonathanEngr.com](http://www.JonathanEngr.com)  
 Engineering • Production • Integration / Subassembly • Logistics  
 United States • Mexico • China • Taiwan



DIMENSIONS SHOWN AS: IN. [MM]

TOLERANCE UNLESS OTHERWISE NOTED
XX ±.030
X [±.8]
XXX ±.005
.XX [±.13]

PART NO. CRS-25-1U

DESCRIPTION: SERIES CRS-25-1U

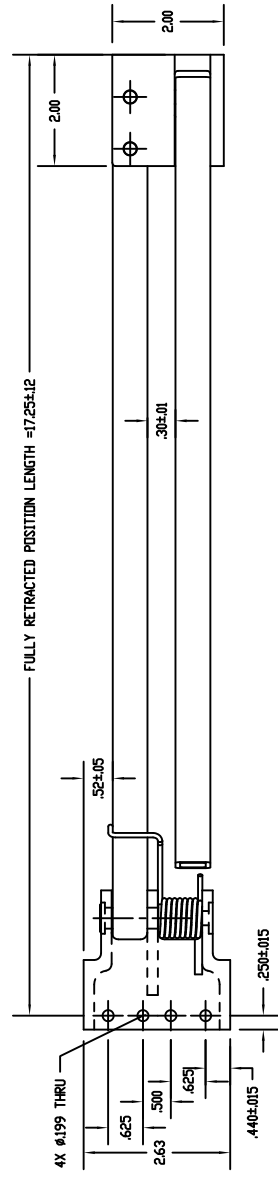
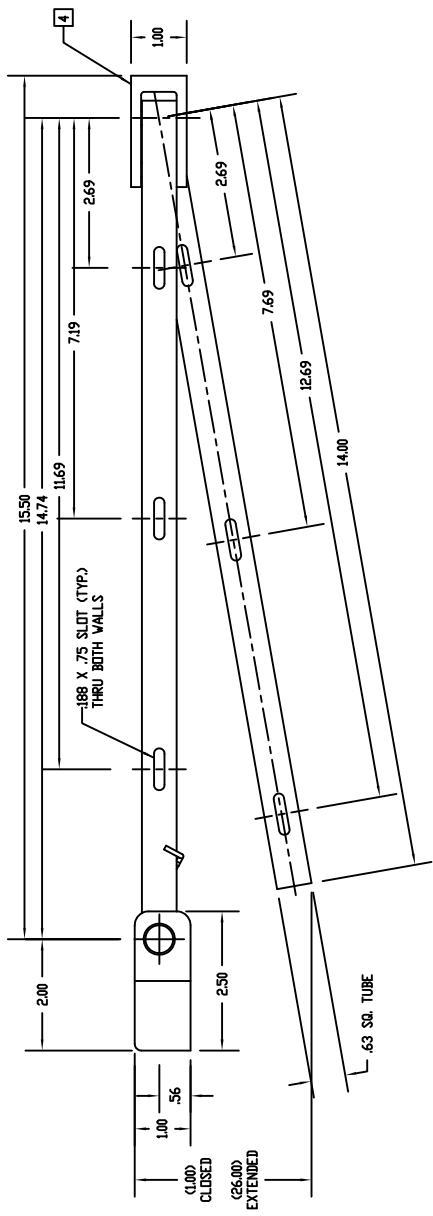
DATE: 1/11

ANGLES ±1°

COPYRIGHT © 2011 JONATHAN ENGINEERED SOLUTIONS

1 2 3 4 5 6

1 2 3 4 5 6



1. MATERIAL: CARBON STEEL
2. FINISH: ZINC PLATE ROHS COMPLIANT.
3. FOR MIRROR IMAGE OF CABLE CARRIER SPECIFY AS: CRS-25-HD-R
- 4 MIDDLE BRACKET IS MANUFACTURED FROM ALUM. ALLOY 7075-T6.

Irvine Technology Center  
 410 Exchange, Suite 200  
 Irvine, CA 92602  
 Tel: (714) 665-4400  
 Website: [www.JonathanEngr.com](http://www.JonathanEngr.com)  
 Engineering • Production • Integration • Subassembly • Logistics  
 United States • Mexico • China • Taiwan



DIMENSIONS SHOWN AS:		PART NO.		DESCRIPTION:	
[MM]		CRS-25-HD		CRS-25-HD	
TOLERANCE UNLESS OTHERWISE NOTED		DATE:			
.XX	±.010	1/11			
.X	[±.3]				
.XXX	±.005				
.XX	[±.13]				
ANGLES ±1°					

COPYRIGHT © 2011 JONATHAN ENGINEERED SOLUTIONS

1 2 3 4 5 6

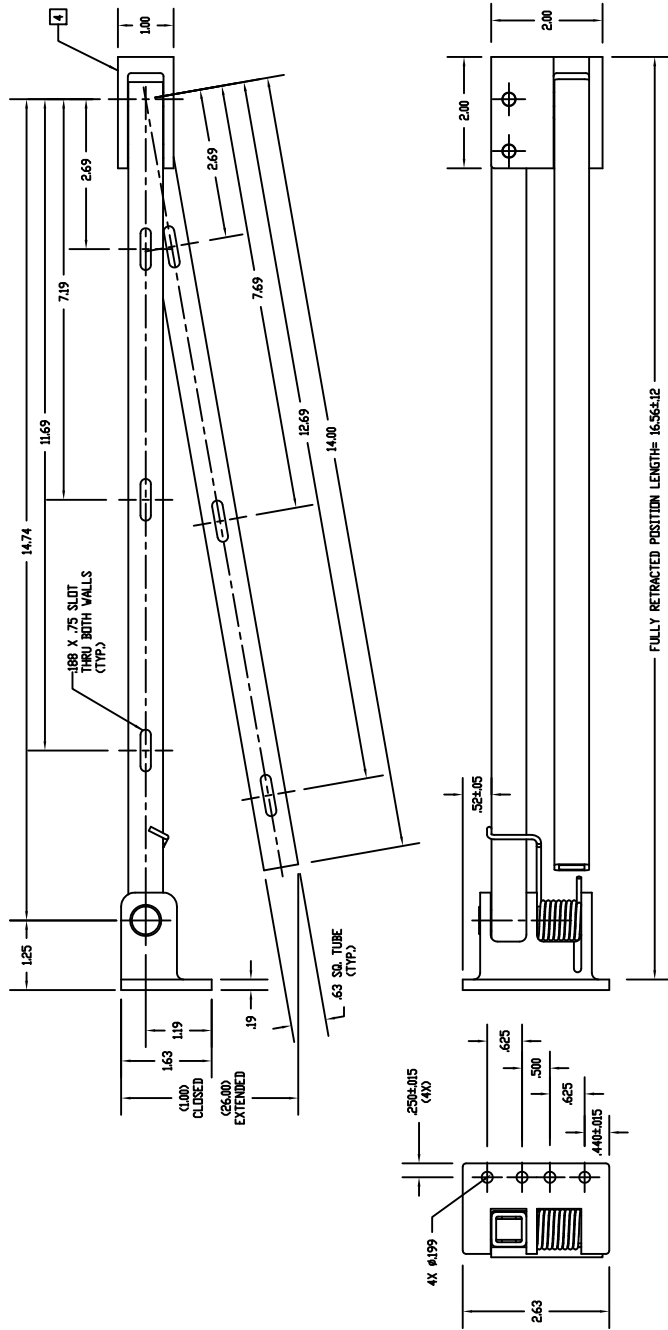
1 2 3 4 5 6

A A

B B

C C

D D



1. MATERIAL: CARBON STEEL
2. FINISH: ZINC PLATE ROHS COMPLIANT.
3. FOR MIRROR IMAGE OF CABLE CARRIER SPECIFY AS: CRS-30-HD-R
4. MIDDLE BRACKET IS MANUFACTURED FROM ALUM. ALLOY 7075-T6.

Irvine Technology Center  
 410 Exchange, Suite 200  
 Irvine, CA 92602  
 Tel: (714) 665-4400  
 Website: [www.JonathanEngr.com](http://www.JonathanEngr.com)  
 Engineering • Production • Integration • Subassembly • Logistics  
 United States • Mexico • China • Taiwan



DIMENSIONS SHOWN AS:	PART NO.	DESCRIPTION:
IN. [MM]	CRS-30-HD	CRS-30-HD
TOLERANCE UNLESS OTHERWISE NOTED		
.XX ±.010		
.X [±.3]	DATE:	1/11
.XXX ±.005		
.XX [±.13]		
ANGLES ±1°		

COPYRIGHT © 2011 JONATHAN ENGINEERED SOLUTIONS

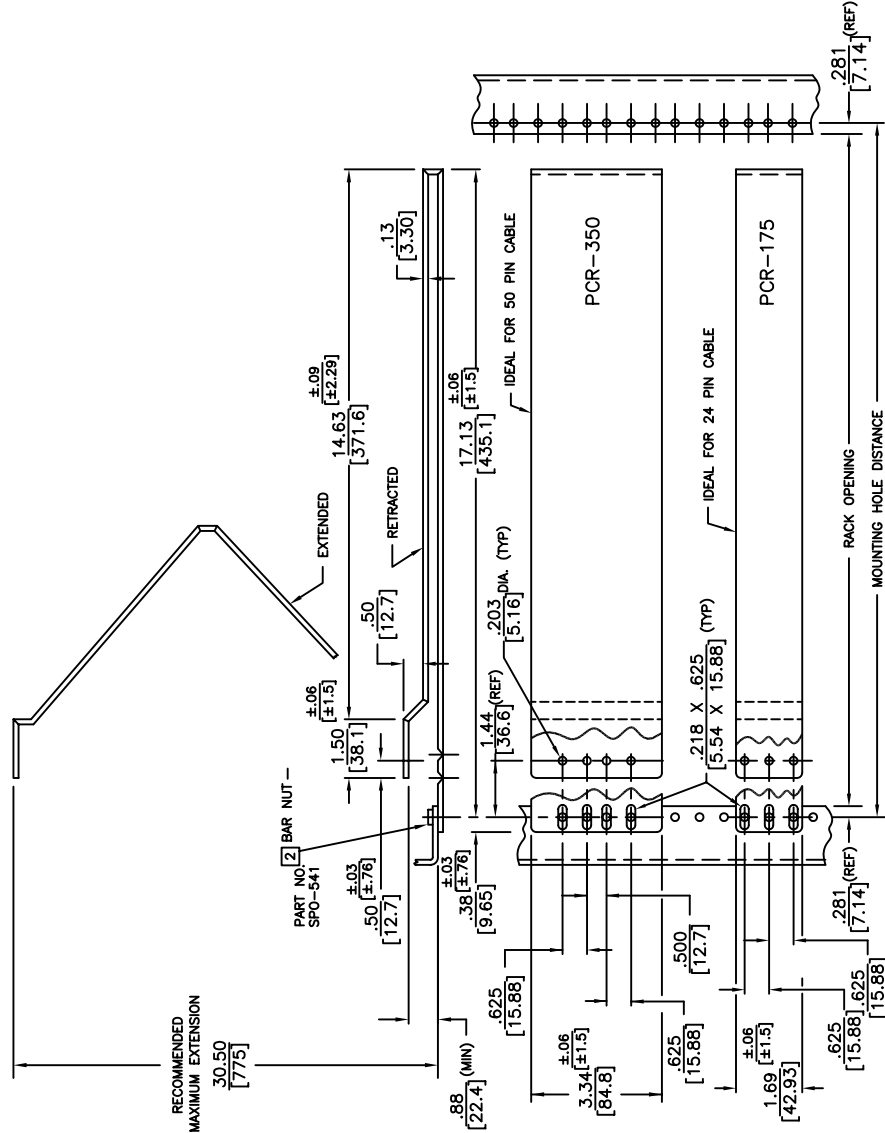
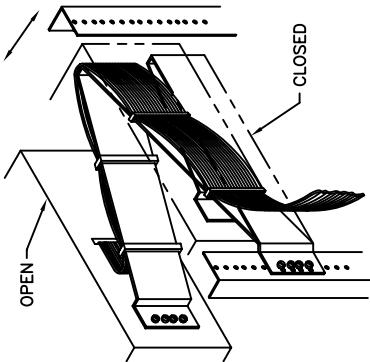
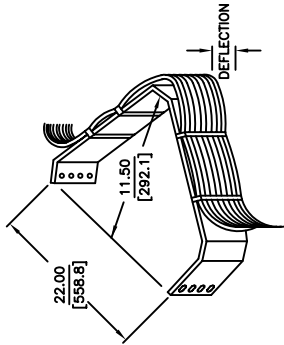
1 2 3 4 5 6



**NOTES:**

- 1. MATERIAL: U.L. APPROVED FLAME RETARDANT POLYPROPYLENE (BLACK) 94 V2.

**[2]** TO BE ORDERED SEPARATELY



Irvine Technology Center  
410 Exchange, Suite 200  
Irvine, CA 92602  
Tel: (714) 665-4400  
Website: [www.JonathanEng.com](http://www.JonathanEng.com)  
Engineering • Production Integration / Subassembly • Logistics  
United States • Mexico • China • Taiwan

**DEFLECTION CHART**

CABLE WEIGHT (LB.)	1/4	1/2	3/4	1	1-1/2	2
PCR-175	.25	.38	.50	.50		
PCR-350	.06	.09	.13	.13	.25	.31

DIMENSIONS SHOWN AS: [IN.] [MM]

PART NO. PCR-175/350

DESCRIPTION: CABLE MANAGEMENT SERIES PCR-175/350

TOLERANCE UNLESS OTHERWISE NOTED

XX ±.030

X ±.8

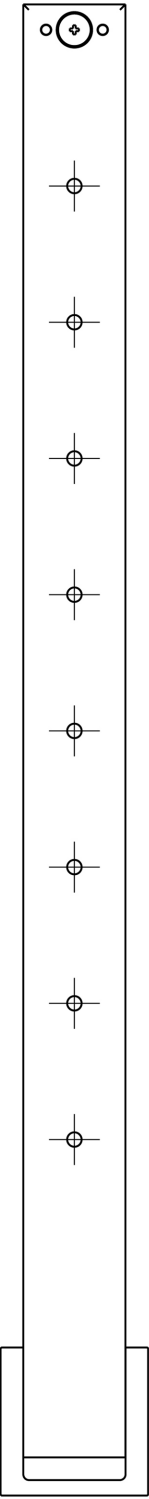
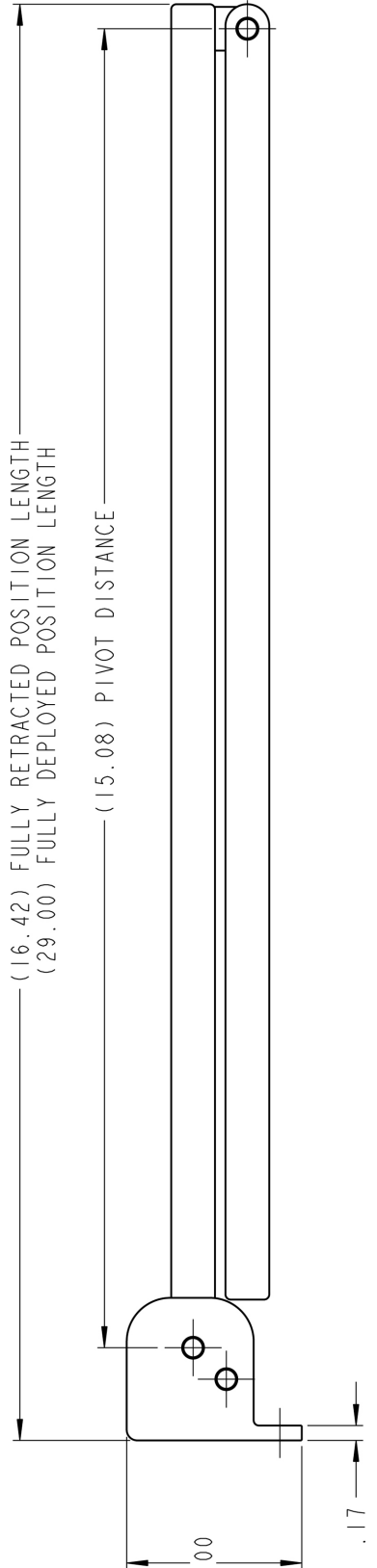
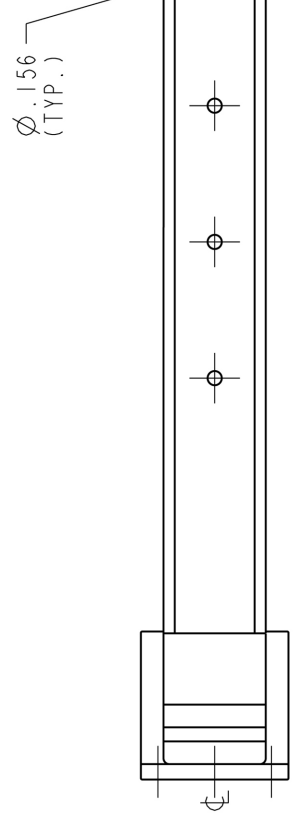
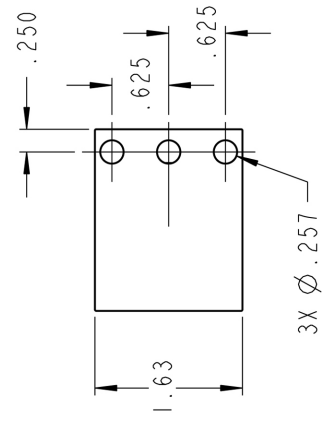

XXX ±.010

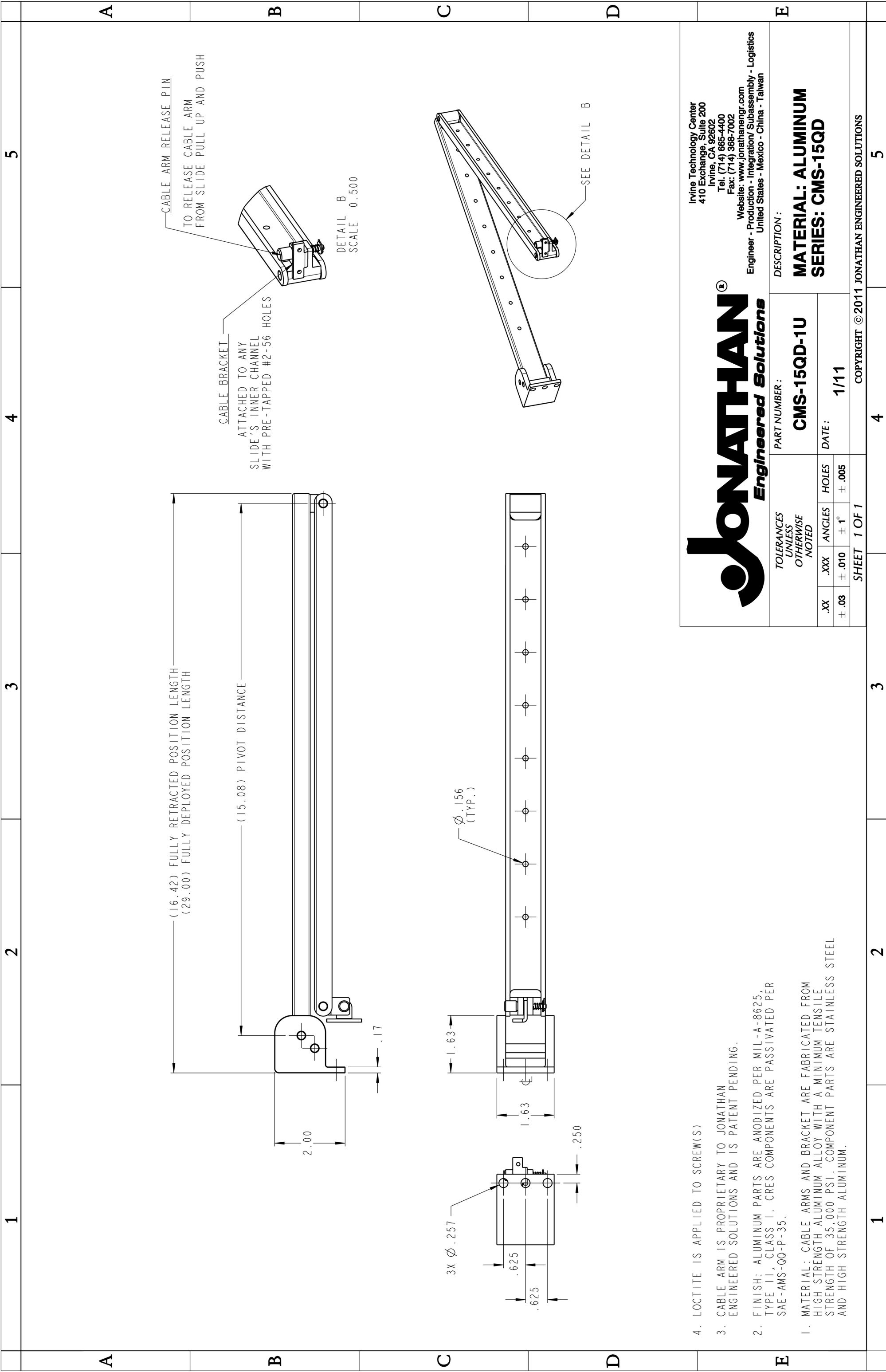
.XX ±.25

ANGLES ±1°

DATE: 1/11

COPYRIGHT © 2011 JONATHAN ENGINEERED SOLUTIONS

	1	2	3	4	5
A					
B					
C					
D					
E	<p>4. LOCTITE IS APPLIED TO SCREW(S)</p> <p>3. CABLE ARM IS PROPRIETARY TO JONATHAN ENGINEERED SOLUTIONS AND IS PATENT PENDING.</p> <p>2. FINISH: ALUMINUM PARTS ARE ANODIZED PER MIL-A-8625, TYPE II, CLASS I. CRES COMPONENTS ARE PASSIVATED PER SAE-AMS-00-P-35.</p> <p>1. MATERIAL: CABLE ARMS AND BRACKET ARE FABRICATED FROM HIGH STRENGTH ALUMINUM ALLOY WITH A MINIMUM TENSILE STRENGTH OF 35,000 PSI. COMPONENT PARTS ARE STAINLESS STEEL AND HIGH STRENGTH ALUMINUM.</p>				
 <p>Irvine Technology Center 410 Exchange, Suite 200 Irvine, CA 92602 Tel: (714) 665-4400 Fax: (714) 368-7002 Website: <a href="http://www.jonathanengr.com">www.jonathanengr.com</a> Engineer - Production - Integration / Subassembly - Logistics United States - Mexico - China - Taiwan</p>					
<p>DESCRIPTION : <b>MATERIAL: ALUMINUM</b> <b>SERIES: CMS-15-1U</b></p>					
PART NUMBER :		CMS-15-1U			
TOLERANCES UNLESS OTHERWISE NOTED		.XX ± .010 ± 1°		HOLES ± .005	
.XX ± .03		ANGLES ± 1°		DATE: 1/11	
SHEET 1 OF 1		COPYRIGHT ©2011 JONATHAN ENGINEERED SOLUTIONS			
1	2	3	4	5	

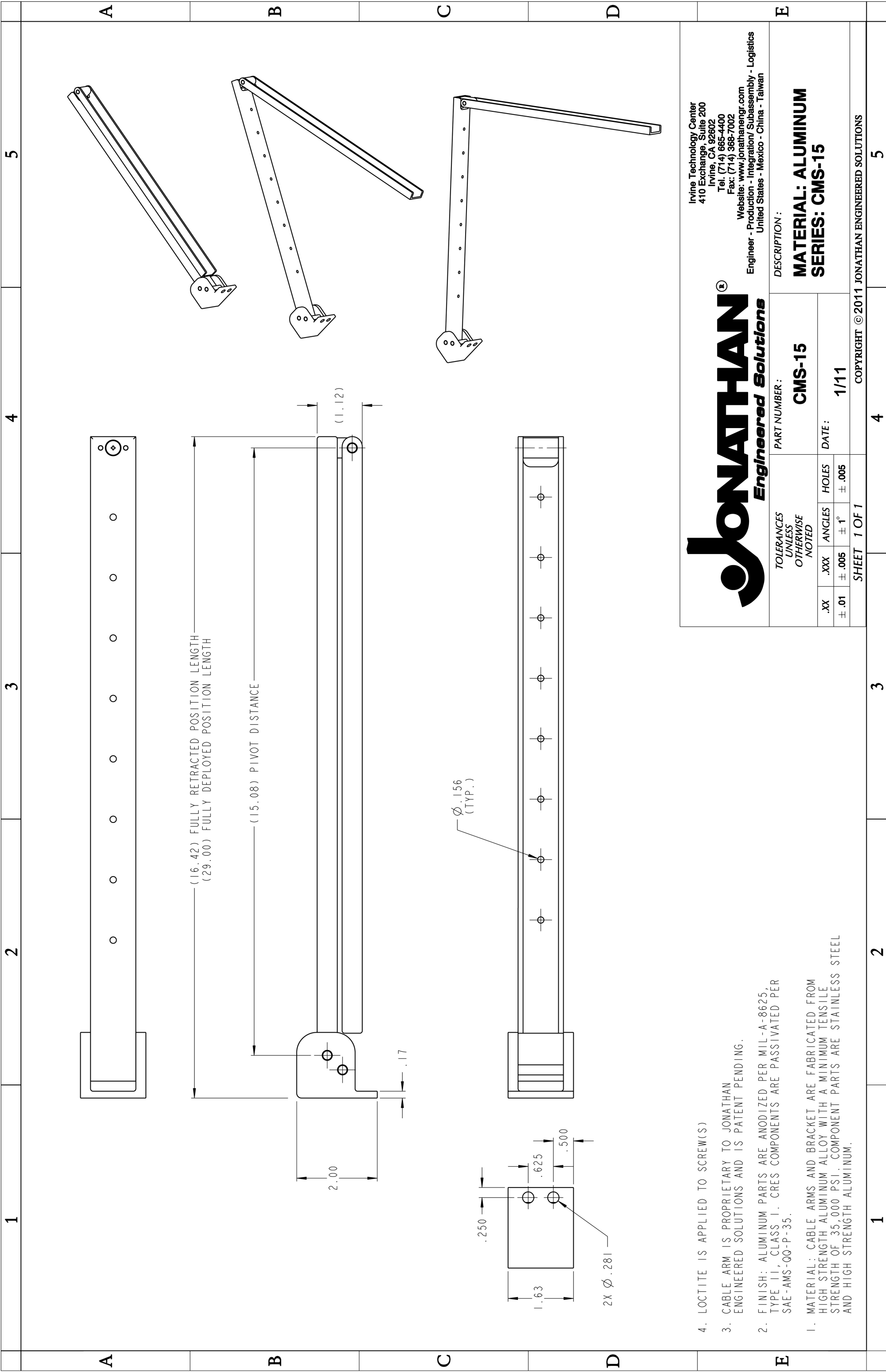


Irvine Technology Center  
 410 Exchange, Suite 200  
 Irvine, CA 92602  
 Tel: (714) 665-4400  
 Fax: (714) 388-7002  
 Website: [www.jonathanengr.com](http://www.jonathanengr.com)  
 Engineer - Production - Integration / Subassembly - Logistics  
 United States - Mexico - China - Taiwan



TOLERANCES UNLESS OTHERWISE NOTED		PART NUMBER: <b>CMS-15QD-1U</b>		DESCRIPTION: <b>MATERIAL: ALUMINUM SERIES: CMS-15QD</b>	
.XX	.XXX	ANGLES	HOLES	DATE: 1/11	
± .03	± .010	± 1°	± .005		
SHEET 1 OF 1			COPYRIGHT © 2011 JONATHAN ENGINEERED SOLUTIONS		

1. MATERIAL: CABLE ARMS AND BRACKET ARE FABRICATED FROM HIGH STRENGTH ALUMINUM ALLOY WITH A MINIMUM TENSILE STRENGTH OF 35,000 PSI. COMPONENT PARTS ARE STAINLESS STEEL AND HIGH STRENGTH ALUMINUM.
2. FINISH: ALUMINUM PARTS ARE ANODIZED PER MIL-A-8625, TYPE II, CLASS I. CRES COMPONENTS ARE PASSIVATED PER SAE-AMS-QQ-P-35.
3. CABLE ARM IS PROPRIETARY TO JONATHAN ENGINEERED SOLUTIONS AND IS PATENT PENDING.
4. LOCTITE IS APPLIED TO SCREW(S)

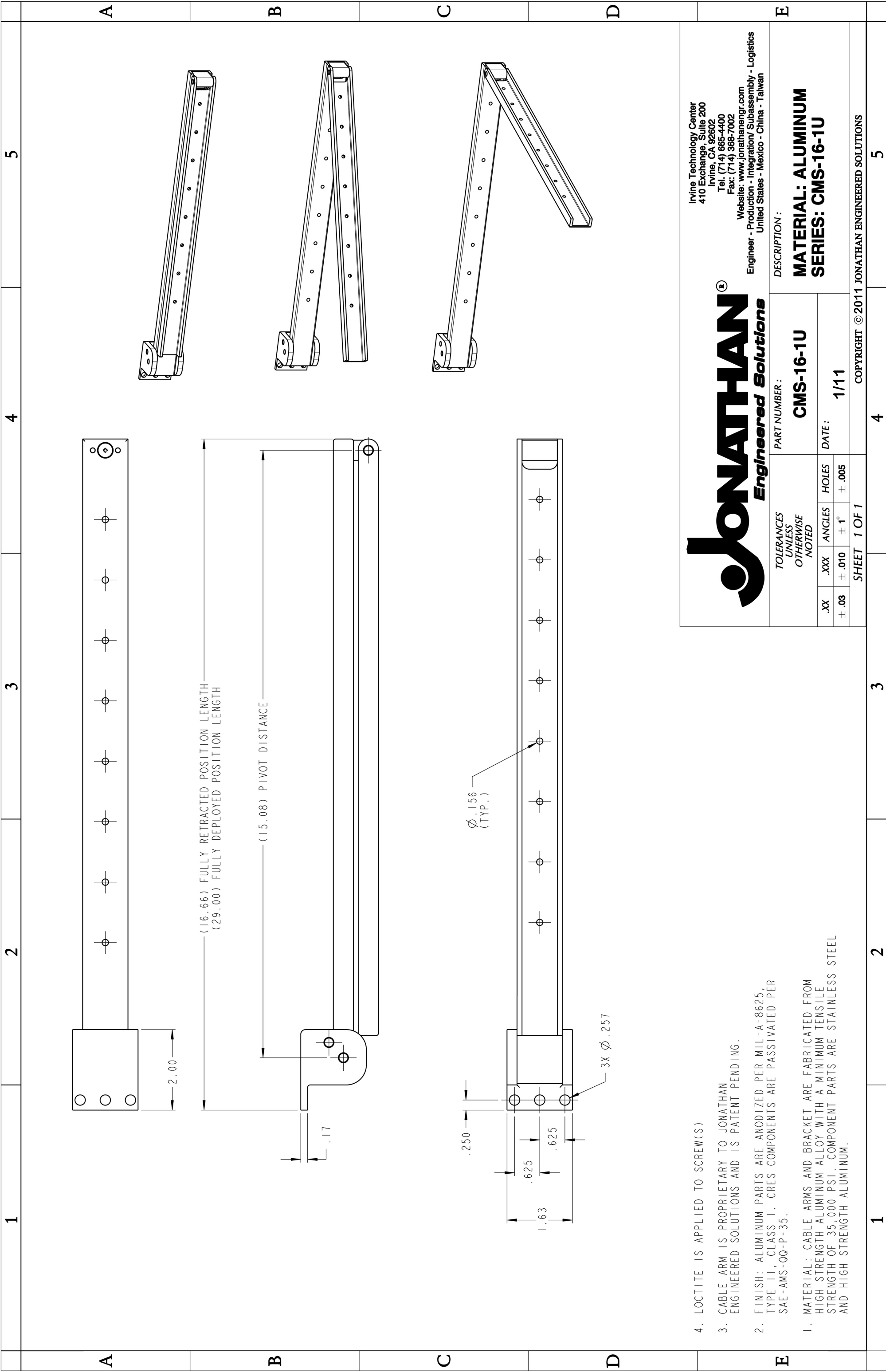


Irvine Technology Center  
 410 Exchange, Suite 200  
 Irvine, CA 92602  
 Tel: (714) 665-4400  
 Fax: (714) 368-7002  
 Website: www.jonathanengr.com  
 Engineer - Production - Integration / Subassembly - Logistics  
 United States - Mexico - China - Taiwan

**JONATHAN**  
 Engineered Solutions

TOLERANCES UNLESS OTHERWISE NOTED		PART NUMBER: <b>CMS-15</b>		DESCRIPTION:	
.XX	.XXX	ANGLES	Holes	DATE:	<b>MATERIAL: ALUMINUM</b> <b>SERIES: CMS-15</b>
± .01	± .005	± 1°	± .005	1/11	
SHEET 1 OF 1					
COPYRIGHT © 2011 JONATHAN ENGINEERED SOLUTIONS					

4. LOCTITE IS APPLIED TO SCREW(S)
3. CABLE ARM IS PROPRIETARY TO JONATHAN ENGINEERED SOLUTIONS AND IS PATENT PENDING.
2. FINISH: ALUMINUM PARTS ARE ANODIZED PER MIL-A-8625, TYPE II, CLASS I. CRES COMPONENTS ARE PASSIVATED PER SAE-AMS-00-P-35.
1. MATERIAL: CABLE ARMS AND BRACKET ARE FABRICATED FROM HIGH STRENGTH ALUMINUM ALLOY WITH A MINIMUM TENSILE STRENGTH OF 35,000 PSI. COMPONENT PARTS ARE STAINLESS STEEL AND HIGH STRENGTH ALUMINUM.



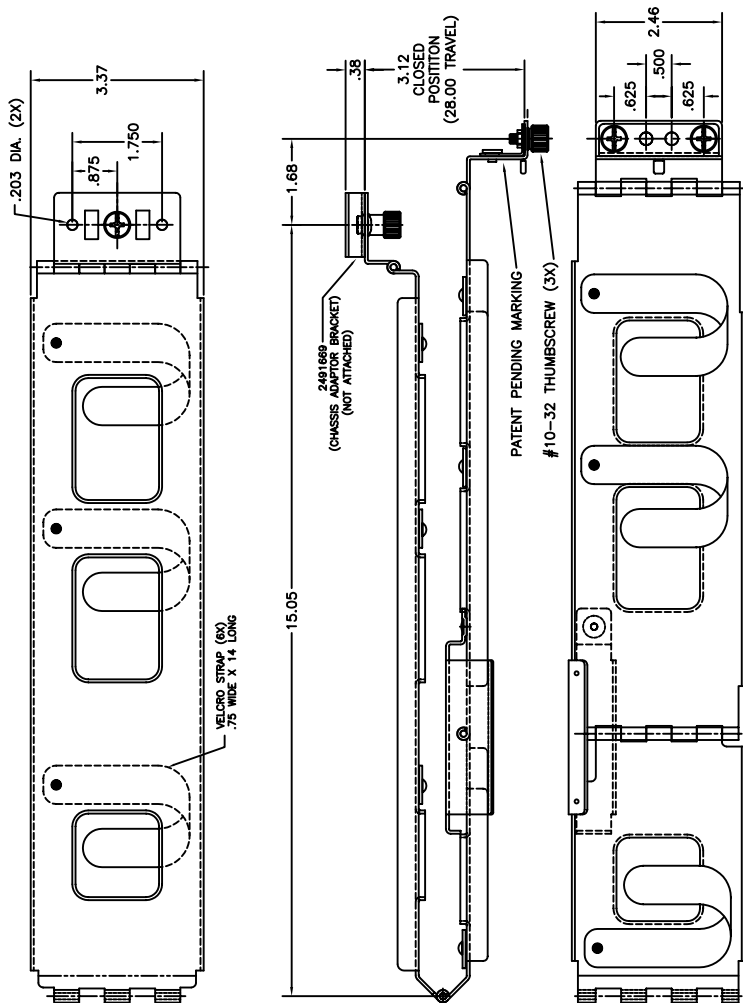
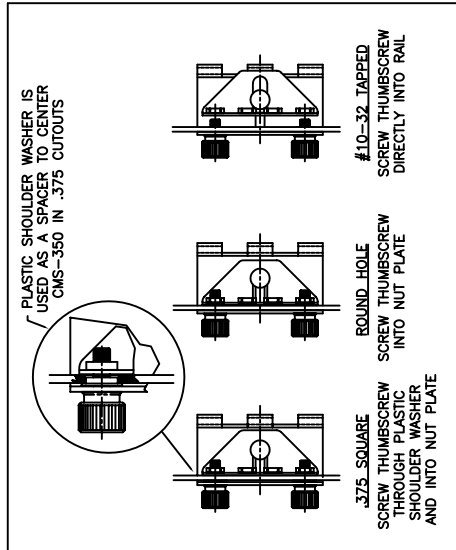
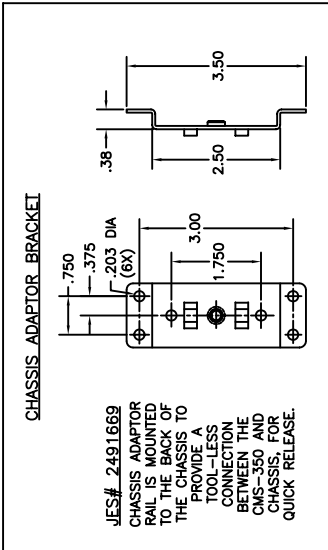
1 2 3 4 5 6

A

B

C

D



CMS-350-K INCLUDES

- 1 CMS-350
- 1 CABLE MANAGEMENT SYSTEM
- 1 CHASSIS ADAPTOR BRACKET
- 2 76885 PLASTIC SHOULDER WASHER



Irvine Technology Center  
410 Exchange, Suite 200  
Irvine, CA 92602  
Tel: (714) 665-4400  
Website: [www.JonathanEng.com](http://www.JonathanEng.com)  
Engineering • Production • Integration • Subassembly • Logistics  
United States • Mexico • China • Taiwan

DESCRIPTION:

PART NO.	CMS-350
DATE:	1/11

DIMENSIONS SHOWN AS:	IN.	[MM]
TOLERANCE UNLESS OTHERWISE NOTED	.XX	[±.8]
	.X	[±.8]
	.XXX	[±.010]
	.XX	[±.25]
ANGLES	±1°	

CABLE MANAGEMENT SYSTEM  
CMS-350  
(PATENTS PENDING)

- 3. CABLE ARM MAXIMUM EXTENSION IS 28.00 INCHES.
- 2. FINISH: COMMERCIAL ZINC PLATE.
- 1. MATERIAL: COLD ROLLED STEEL.

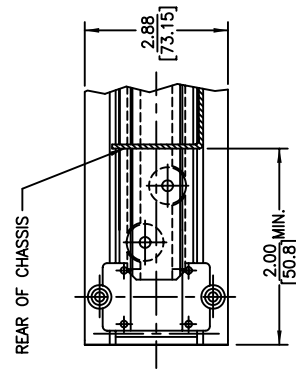
COPYRIGHT © 2011 JONATHAN ENGINEERED SOLUTIONS

1 2 3 4 5 6

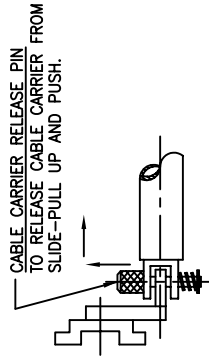
1 2 3 4 5 6

**NOTES:**

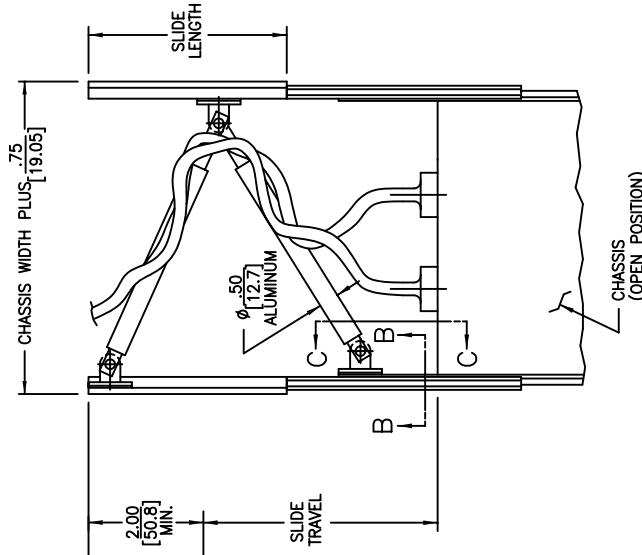
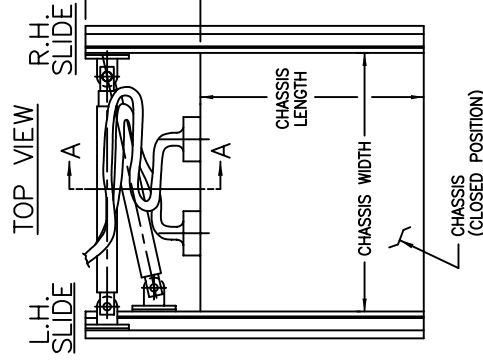
- 1 CABLE CLAMPS NOT SUPPLIED.
- 2 WHEN REQUESTING PTC ASSEMBLIES, CHASSIS LENGTH AND CHASSIS WIDTH DIMENSIONS MUST BE SUPPLIED BY CUSTOMER.



VIEW A-A



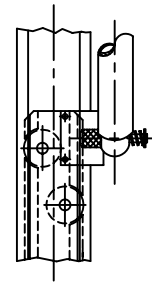
VIEW B-B



Irvine Technology Center  
 410 Exchange, Suite 200  
 Irvine, CA 92602  
 Tel: (714) 665-4400  
 Website: [www.JonathanEngr.com](http://www.JonathanEngr.com)  
 Engineering • Production • Integration • Subassembly Logistics  
 United States • Mexico • China • Taiwan

**DESCRIPTION:**

DIMENSIONS SHOWN AS:	PART NO.	PTC-CABLE CARRIER	
[MM]		SERIES 120	
TOLERANCE UNLESS OTHERWISE NOTED		DATE: 1/11	
.XX ±.030			
.X [±.8]			
.XXX ±.010			
.XX [±.25]			
ANGLES ±1°		COPYRIGHT © 2011 JONATHAN ENGINEERED SOLUTIONS	



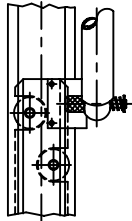
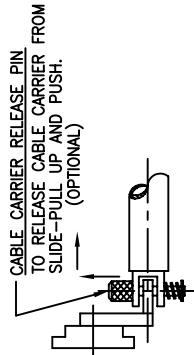
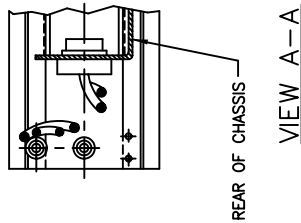
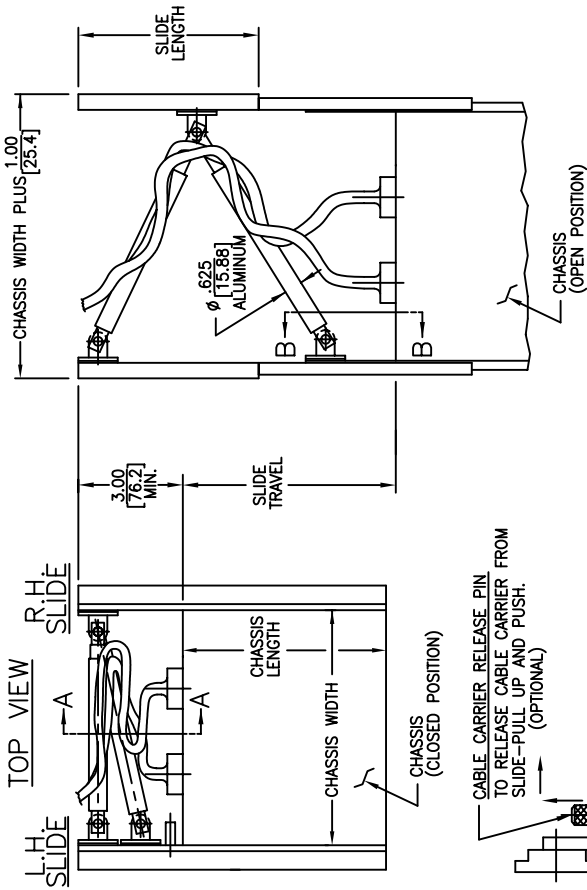
VIEW C-C

1 2 3 4 5 6

1 2 3 4 5 6

NOTES:

- 1 CABLE CLAMPS NOT SUPPLIED.
- 2 WHEN REQUESTING PTC ASSEMBLIES, CHASSIS LENGTH AND CHASSIS WIDTH DIMENSIONS MUST BE SUPPLIED BY CUSTOMER.



Irvine Technology Center  
410 Exchange, Suite 200  
Irvine, CA 92602  
Tel: (714) 665-4400  
Website: [www.JonathanEngr.com](http://www.JonathanEngr.com)  
Engineering • Production • Integration • Subassembly Logistics  
United States • Mexico • China • Taiwan

DESCRIPTION:

PART NO.

DIMENSIONS SHOWN AS:

IN.	[MM]
TOLERANCE UNLESS OTHERWISE NOTED	
.XX	±.030
.X	[±.8]
.XXX	±.010
.XX	[±.25]

DATE: 1/11

PTC-CABLE CARRIER

SERIES 130, 145, 150

COPYRIGHT © 2011 JONATHAN ENGINEERED SOLUTIONS

1 2 3 4 5 6

A

B

C

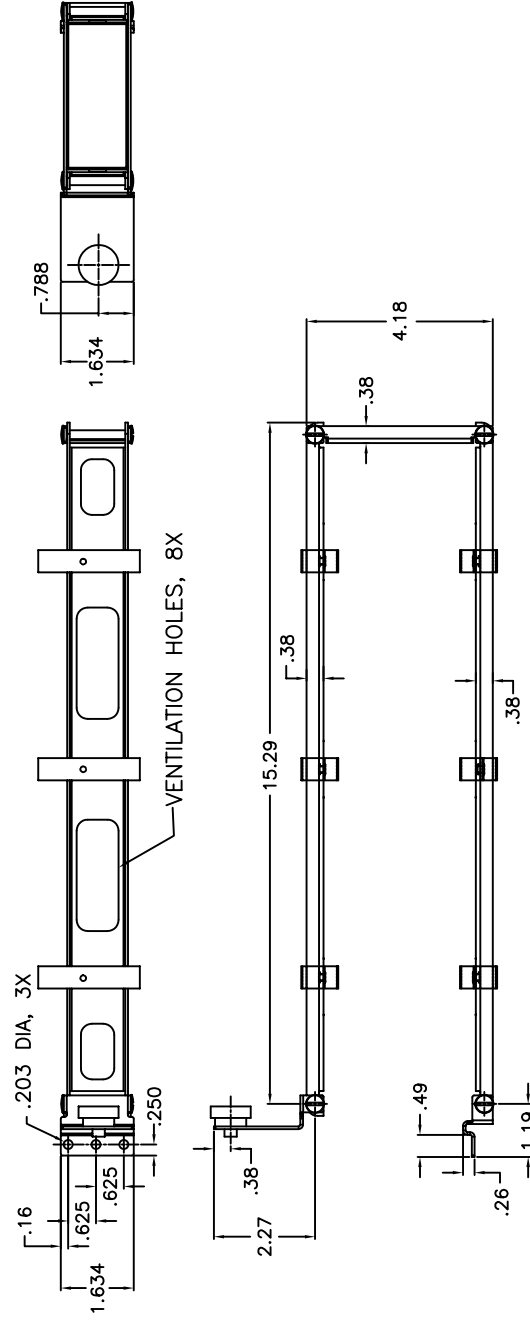
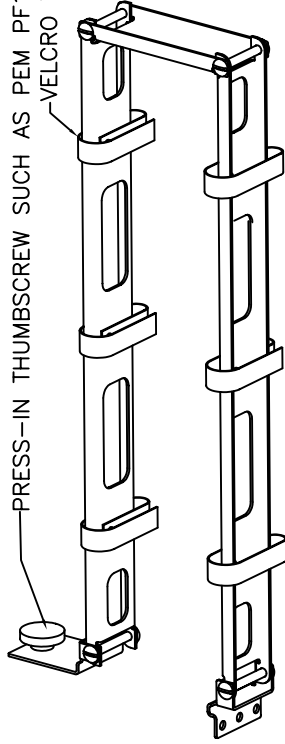
D



1 2 3 4 5 6

- 1 MATERIAL: COLD ROLLED STEEL
- 2 FINISH: COMMERCIAL ZINC-PLATE

PRESS-IN THUMBSCREW SUCH AS PEM PF11-632-0-CN  
VELCRO TIE, 6X



VENTILATION HOLES, 8X

Irvine Technology Center  
410 Exchange, Suite 200  
Irvine, CA 92602  
Tel: (714) 665-4400  
Website: [www.JonathanEngr.com](http://www.JonathanEngr.com)  
Engineering • Production • Integration • Subassembly • Logistics  
United States • Mexico • China • Taiwan



DIMENSIONS SHOWN AS: [IN.] [MM]

TOLERANCE UNLESS OTHERWISE NOTED	
XX	±.050
X	[±.76]
XXX	±.010
.XX	[±.25]

PART NO.

MCR-1019

DATE:

1/11

DESCRIPTION:

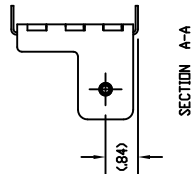
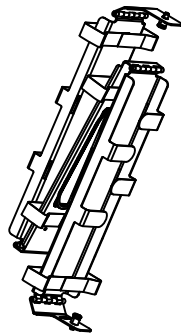
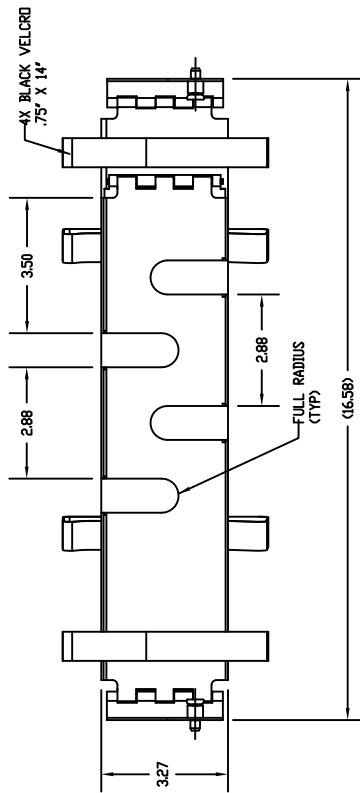
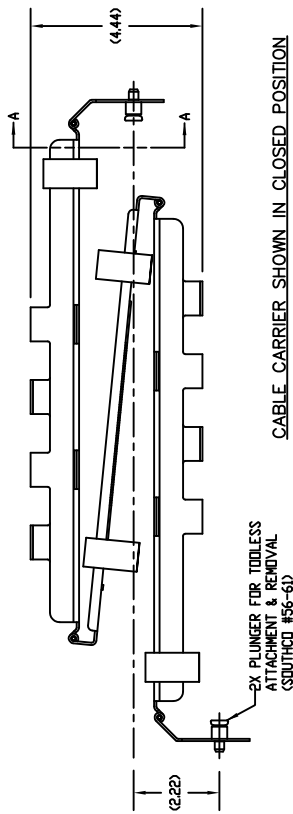
CABLE MANAGEMENT  
SERIES MCR-1019

COPYRIGHT © 2011 JONATHAN ENGINEERED SOLUTIONS

1 2 3 4 5 6

2. THIS PART TO BE ROHS COMPLIANT.

1. MATERIAL & FINISH: 060" THICK STEEL, LOW CARBON COMMERCIAL QUALITY ELECTRO-GALVANIZED WITH HEXAVALENT CHROMIUM-FREE CHEMICAL TREATMENT, CLASS B (ASTM A593).

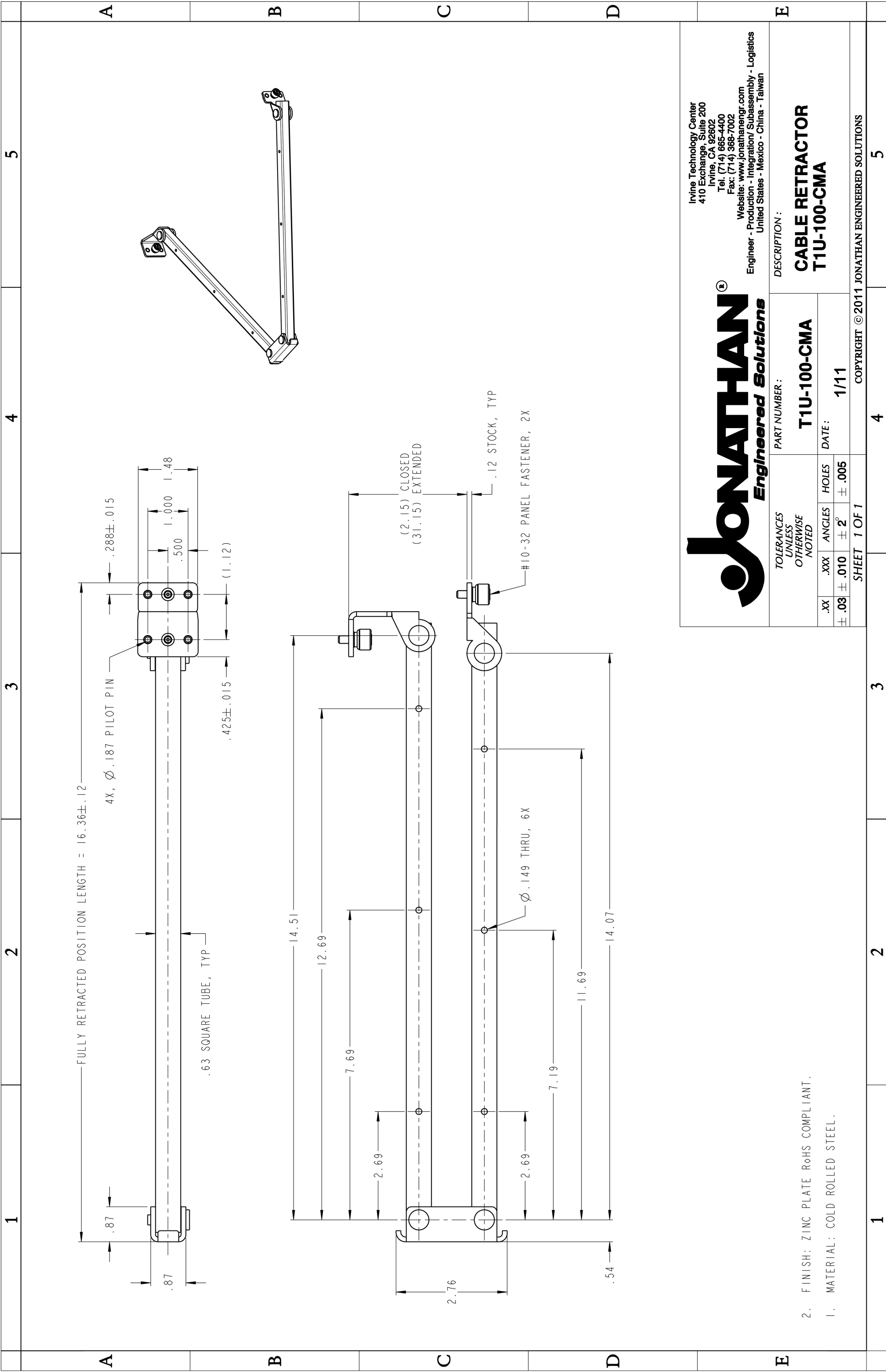


Irvine Technology Center  
410 Exchange, Suite 200  
Irvine, CA 92602  
Tel: (714) 665-4400  
Website: [www.JonathanEngr.com](http://www.JonathanEngr.com)  
Engineering • Production • Integration • Subassembly • Logistics  
United States • Mexico • China • Taiwan

DESCRIPTION:

DIMENSIONS SHOWN AS:	PART NO.	DESCRIPTION:
[MM]	MCR-1022	CABLE MANAGEMENT
TOLERANCE UNLESS OTHERWISE NOTED		SERIES MCR-1022
.XX ±.030	DATE:	
.X [±.8]	1/11	
.XXX ±.010		
.XX [±.3]		
ANGLES ±1°		

COPYRIGHT © 2011 JONATHAN ENGINEERED SOLUTIONS

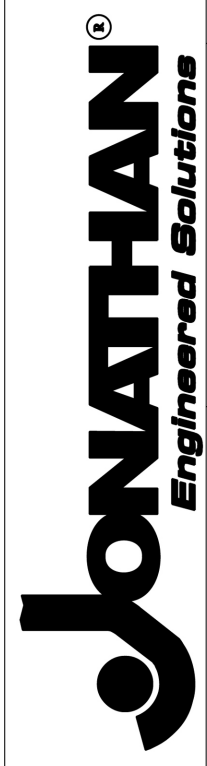
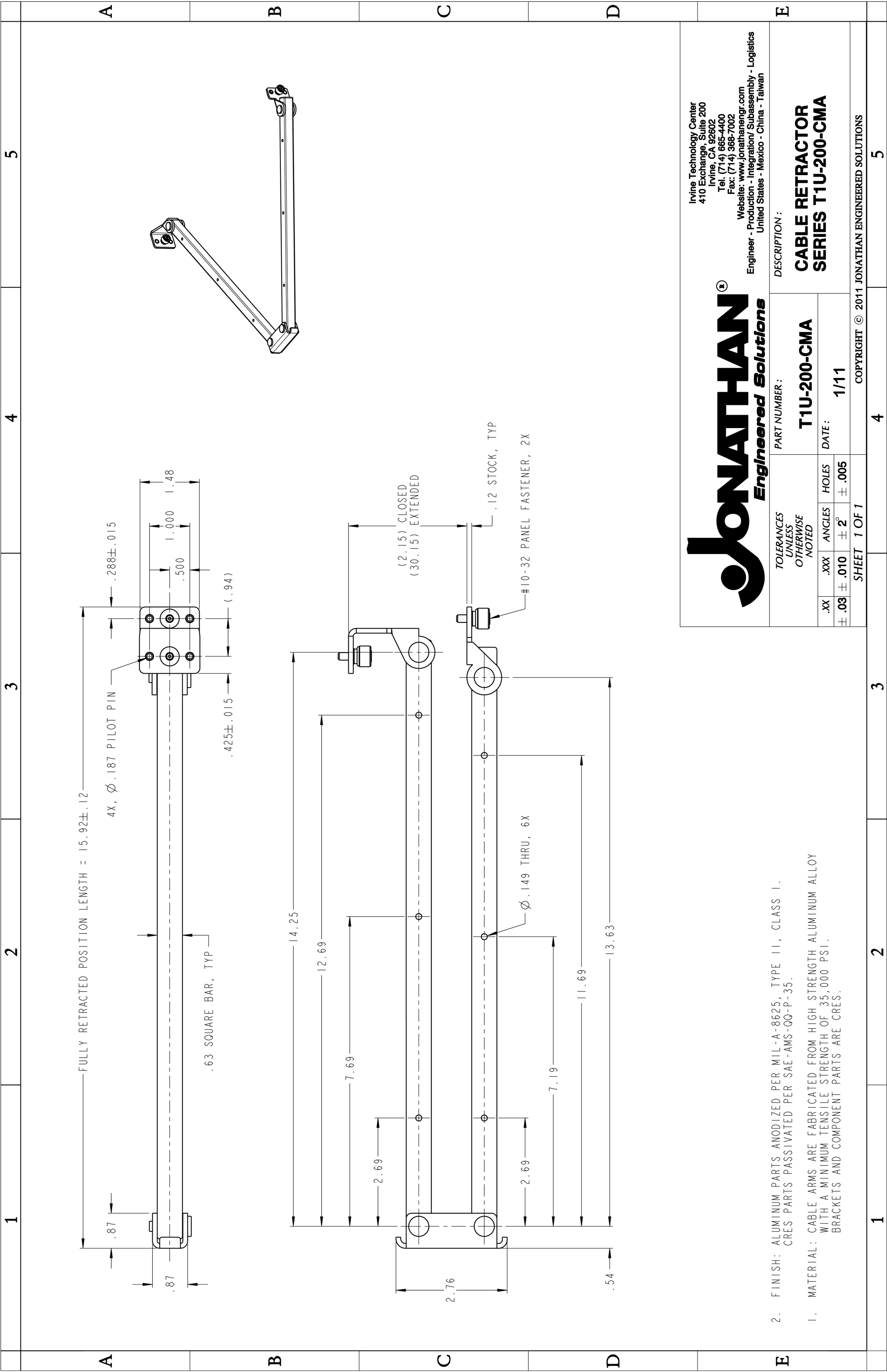


**JONATHAN**  
Engineered Solutions

Irvine Technology Center  
410 Exchange, Suite 200  
Irvine, CA 92602  
Tel: (714) 665-4400  
Fax: (714) 388-7002  
Website: www.jonathanengr.com  
Engineer - Production - Integration / Subassembly - Logistics  
United States - Mexico - China - Taiwan

TOLERANCES UNLESS OTHERWISE NOTED		PART NUMBER: <b>T1U-100-CMA</b>		DESCRIPTION: <b>CABLE RETRACTOR T1U-100-CMA</b>	
.XX	.XXX	ANGLES	HOLES	DATE:	1/11
± .03	± .010	± 2°	± .005	SHEET 1 OF 1	
COPYRIGHT © 2011 JONATHAN ENGINEERED SOLUTIONS			4		

2. FINISH: ZINC PLATE RoHS COMPLIANT.
1. MATERIAL: COLD ROLLED STEEL.



Irvine Technology Center  
 410 Exchange, Suite 200  
 Irvine, CA 92602  
 Tel: (714) 665-4400  
 Fax: (714) 368-7002  
 Website: www.jonathanengr.com  
 Engineer - Production - Integration / Subassembly - Logistics  
 United States - Mexico - China - Taiwan

TOLERANCES UNLESS OTHERWISE NOTED		PART NUMBER: <b>T1U-200-CMA</b>	
.XX	.XXX	ANGLES	HOLES
± .03	± .010	± 2°	± .005
SHEET 1 OF 1		DATE:	1/11
DESCRIPTION: <b>CABLE RETRACTOR          SERIES T1U-200-CMA</b>			
COPYRIGHT © 2011 JONATHAN ENGINEERED SOLUTIONS			

2. FINISH: ALUMINUM PARTS ANODIZED PER MIL-A-8625, TYPE II, CLASS I.  
 CRES PARTS PASSIVATED PER SAE-AWS-00-P-35.
1. MATERIAL: CABLE ARMS ARE FABRICATED FROM HIGH STRENGTH ALUMINUM ALLOY WITH A MINIMUM TENSILE STRENGTH OF 35,000 PSI.  
 BRACKETS AND COMPONENT PARTS ARE CRES.

1

2

3

4

5

A

B

C

D

E

1

2

3

4

5

